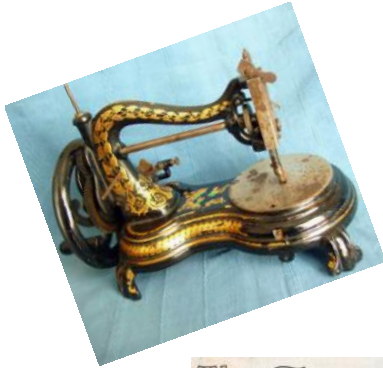


# April Meeting Fun

## History of the Sewing Machine

Bring and share your favorite sewing machine or memorabilia



A vintage New Home Sewing Machine Co. advertisement or label, featuring a large hand-crank wheel and a decorative base.



## Make - n - Take

Bring a hand sewing needle, thread, and scissors



# Everett Quilt Guild Newsletter



## Guild Meeting

*Monday, April 22nd*

at the **South Precinct of the  
Everett Police Department.**

Doors open at 5:30 PM  
Meeting Begins: 6:00 PM

## Snacks

Susan, Dawn, & Becky

## April Agenda

### **Program Theme -**

History of the Sewing Machine

Bring or share your oldest or  
favorite sewing machine or  
sewing memorabilia

Make - n - Take

BOM # 4 Fancy Pinwheels

Show n Tell

## President Letter

Dear Guild Members,

It was so nice seeing all of you at the March Guild meeting. The Presentation on Rulers was very informative; thank you Pat. I'd also like to thank Karen, Donna, and Alice who volunteered to show us how to use different rulers. The Quilto game was fun and it was great having Rachel's spouse read out the items for the game. I personally love seeing all your Show 'N Tell quilts/projects. Keep them coming .

Just a reminder that the May meeting will be held on the 20th at Alfy's Pizza. There should be more detail info in the newsletter. The April Meetings Theme is "Investigating" The history of the sewing machine. If you have a sewing machine you would like to share, please bring it. Also, for the Take 'N Make you will need to bring a sewing needle and scissors to participate. This promises to be another wonderful meeting of learning, sharing, and fun. Can't wait to see all of you wonderful quilters Monday, April 22!!

Becky

## Fish Bowl Raffle May Meeting 2019



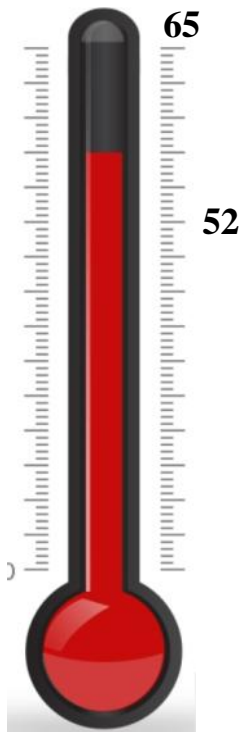
## What will you be making??

We are asking each member to make an item to donate to the fish bowl raffle in May. We all have talents other than quilt making. Maybe, you like to make bags, potholders, dolls, etc. these would be perfect for this event. Tickets will be sold the day of the meeting. Tickets will be 15 tickets for \$ 20.00 or \$ 3.00 each.

The bonus to this raffle is -

- \* Members get to highlight other items that they like to make
- \* Multiple winners

Goal 65 Quilts !!!



## DEADLINE FOR CLARE'S PLACE TRANSITIONAL QUILT TOPS

**March 25, 2019 Deadline**

We are well on our way.

Status:

52 quilt tops complete

10 quilt tops at the longarm

7 quilts that need to be bound

This leaves 0 tops to complete our goal.

We will be seeking volunteers to bind starting at April's guild meeting. We will have a sign up sheet so we can call you as quilts come in from

04-10-19

Detailed retreat info will be sent out to all members in the next week or sooner. It will include the meal menu, project info that Karen will be teaching and the extra fee dollar amount and how and when to pay, and other info.

We (attendees of retreat) will meet for a huddle after the general meeting on 4-22 for final info and discuss any needs prior to retreat.

**amazon**smile  
Prime

If you shop on Amazon please remember to sign in using Amazon Smile and select Everett Quilt Guild as your charitable organization so our guild can receive a percentage of your purchase price.

### COLLECT & Bring to Meetings

Empty Spools - Susan

Selvages - Dawn

Scraps - small Debbie, larger Dawn \*\* one's that are too small to quilt with & that kids can pick up are donated to the YMCA for art projects

Textile Recycle - Susan or

## Our Mission Statement

The Everett Quilt Guild is organized for educational purposes to encourage all interested individuals in the study of quilting in all its forms and to prepare and provide finished quilts to service/charitable organizations of the Snohomish County community

The Calendar has been updated and reflects changes. Please use this calendar going forward. Each month you will find a new calendar attached to the newsletter. The prior month's color will come off showing that the month is complete. Please check for any additions of what is going on at each meeting or what you may need to bring. Thank You!!

Also, our newsletter is getting to be too many pages. Please when submitting information for the newsletter cut down the size to fit more appropriately on a smaller number of pages. (think magazine size) Thanks for your help with this.



## May's Meeting

Re-scheduled to Monday,  
**May 20th @**  
Alfy's Pizza (by the skate  
deck)

9620 19th Ave SE, Everett  
WA

### Next Board Meeting

**May 9th, 6:30 pm at Susan's home.**

Board meetings are where the business decisions of the guild are proposed, debated, and acted upon. All guild members are encouraged to attend and to bring ideas and concerns to their elected officers. If you are unable to attend but wish to have something brought before the Executive Board, please e-mail your elected president and she'll introduce your ideas and / or concern during the meeting.



April 6" Squares

**PINK**



All the squares do not have to be the same. If you signed up for more than one set, the sets should NOT be identical and each set must be in a separate zip lock bag with your name on it. Note: Quilt Guild block is donated to the guild for Community Quilts.

### PARTICIPANTS

Charlene L (3)  
Pat J (3)  
Becky P (2)  
Deb L (3)  
Quilt Guild (1)

Donna M (2)  
Susan (2)  
Joellyn C (3)  
Ana V (2)

The May theme will be Flowers. If you have suggestions for future blocks exchange themes, please let Deb L know by email, phone or at a Guild functions.

Everett Quilt Guild Minutes  
March 25, 2019

Meeting was called to order by President Becky P at 6:03

Old Business:

Minutes of the February meeting were approved.

Becky announced a board meeting date change. April's board meeting will be on April 11th at Susan's home.

The May general guild meeting will be at Alfy's Pizza.

New Business:

A vote was taken to reimburse Dawn and Pat for batting purchased for the Clare's Place quilts. A discussion was held concerning setting aside money for one additional roll of batting for use on Firehouse Quilts and other charitable quilts made by the guild. The final decision was to reimburse Dawn \$108.20, Pat \$170.00 and to set aside \$300 to purchase batting when it goes on sale.

There was a discussion on the Fabric Square Exchange. The number of people participating dropped the last two months. It was decided to continue the exchange through December of 2019 and then take a vote to continue or stop this activity.

Becky sent the guild's By-Laws to all members. She has asked us to review them and to suggest any needed changes. They will be discussed at the next two board meetings. All changes need to be published twice in the newsletter before being voted upon at the September Business Meeting.

Charlene did a short presentation on the Rare Bare Army program and had cards with further information for anyone wishing to participate in this charitable project.

Block of the Month

Pat presented some tips for sewing half square triangles and gave us examples of different layouts for this month's block. She also discussed light, medium, and dark fabrics.

Retreat:

Signup sheets were available. Members were asked to sign up for duties and activities. Payments on open balances are due tonight.

We broke for snack and fellowship.

Program:

Pat gave a presentation on the anatomy of a quilt ruler. We broke into small groups and rotated between our program presenters. Each presenter talked about how to use a specific ruler. Presenters were Becky, Donna, Alice, and Karen.

Dawn passed out "Sewing Bingo cards and we played for rulers that were donated by guild members.

Susan presented this evening's Tip.

Drawings were held for completed Block of the Month blocks and for those who contributed to the completion of charity quilts.

Meeting adjourned at 8:05.

Respectfully submitted,

Pat J

Secretary

# Everett Quilt Guild

## Block of the Month

### April 2019 - Fancy Pinwheels

#### Fabrics and Cutting:

Starch or size (Best Press) all fabrics before cutting

#### Option 1 - Two Fabrics:

Light Fabric

Cut 4 squares  $4\frac{1}{4}$  X  $4\frac{1}{4}$  ”

Cut 4 rectangles  $3\frac{1}{2}$ ” X  $6\frac{1}{2}$ ”

Dark Fabric

Cut 4 squares  $4\frac{1}{4}$  ” X  $4\frac{1}{4}$  ”

Cut 4 squares  $1\frac{1}{2}$ ” X  $1\frac{1}{2}$ ”

#### Option 2 - Scrappy

Light Fabric

Cut  $4\frac{1}{4}$  “X  $4\frac{1}{4}$  “squares from 4 different fabrics

Cut  $3\frac{1}{2}$ ” X  $6\frac{1}{2}$ ”rectangles from 4 different fabrics

Dark Fabric

Cut  $4\frac{1}{4}$  “X  $4\frac{1}{4}$  ”squares from 4 different fabrics

Cut  $1\frac{1}{2}$ ” X  $1\frac{1}{2}$ ” squares from 4 different fabrics

#### Sewing Units:

#### Half Square Triangle Units

Using the  $4\frac{1}{4}$  “ squares (one light, one dark) construct eight (8)

$\frac{1}{2}$  square triangle units.

Press the seams open.

Trim each  $\frac{1}{2}$  square triangle unit to  $3\frac{1}{2}$ ” X  $3\frac{1}{2}$ ”.

Join two  $\frac{1}{2}$  square triangles together. Repeat to create 4 units.

#### Snowball Corner Units

Draw a diagonal line on the back of each  $1\frac{1}{2}$ ” square.

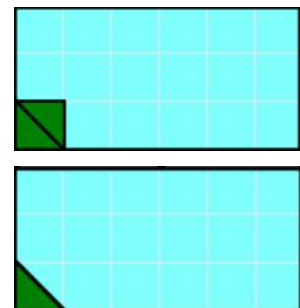
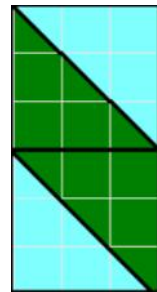
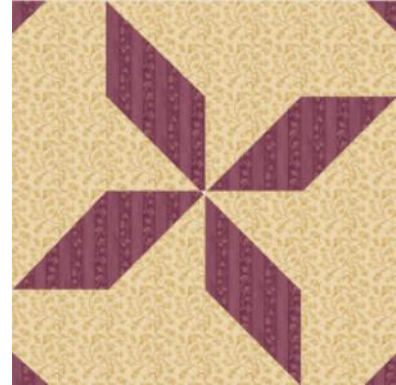
Position the  $1\frac{1}{2}$ ” square on the lower left hand corner of a rectangle RST (right sides together)

Stitch on the drawn line.

Trim the excess corner fabric leaving a  $\frac{1}{4}$ ” seam allowance

Press the seam to the dark fabric.

Repeat to create 4 units.



# Everett Quilt Guild

## Block of the Month

### April 2019 - Fancy Pinwheels

#### Assembling the Block:

Sew a rectangle unit to a  $\frac{1}{2}$  square triangle unit.

Press the seam towards the rectangle unit.

Repeat to create 4 units.

Each unit should measure  $6\frac{1}{2}$ " X  $6\frac{1}{2}$ "

Following the diagram, lay out the 4 units.

Stitch the top 2 units together.

Press the seam open

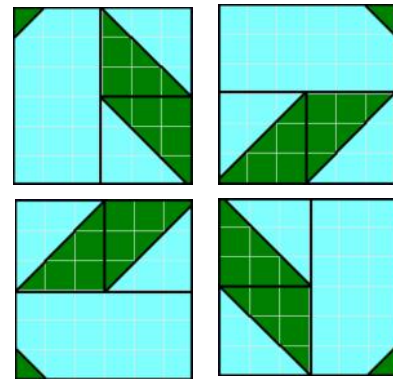
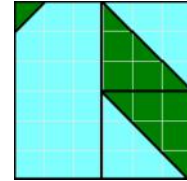
Stitch the bottom 2 units together.

Press the seam open.

Sew the top and bottom sections together to complete the block.

Press the seam open.

Block should measure  $12\frac{1}{2}$ " X  $12\frac{1}{2}$ "



#### **Skill Builders:**

- 1/2 Square Triangles
- Snowballing corners
- Assembling a block by sections
- Matching points
- Dealing with thick seams
- Pressing seams open